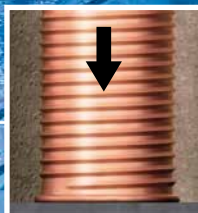


PRIMA special car 230

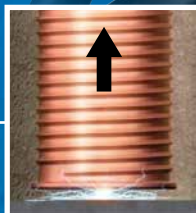
Cod. 80010400



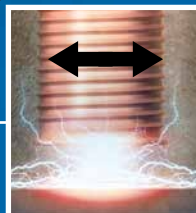
WELDING SHORT CYCLE



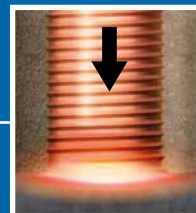
APPOGGIO
PLACE
APOYO
UNTERSTÜTZUNG



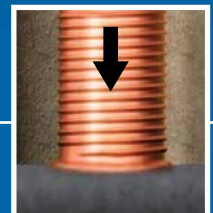
DISTACCO E INNESCO
REMOVE AND PRIME
DESTAQUE
Y DETONADOR
VERÖFFENTLICHUNG
UND TRIGGER



ARCO ACCESO
ARC ON
ARC PRENDIDO
ARC EIN



PENETRAZIONE
PENETRATION
PENETRACIÓN
DURCHBRUCH



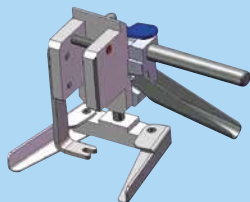
RAFFREDDAMENTO
COOLING
REFRIGERACIÓN
KÄLTE



PSC
od. 30010027



PSC
cod. 30010027



PULLER
cod. 30010028



PULLER ACAL
cod. 80010006



MAN cod. 80010004
MAN 5 cod. 80010034
MAN 6 cod. 80010035



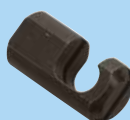
PM 50 cod. 30010030
PM 75 cod. 30010031
PM 105 cod. 30010032



E 64
cod. 30010033



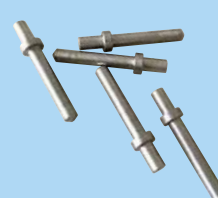
TAV
cod. 80010012



TAM
cod. 80010013



MULTIGANCIO 614
cod. 60010403
MULTIGANCIO 610
cod. 60010407



P 4SC
cod. 30010026



PERNO 180
cod. 80010014
PERNO 300
cod. 80010016



CAN 150
cod. 30010021



MAR 4
cod. 80010015



RAR AL
cod. 30010024



RA AL
cod. 30010023



SPECIALCAR 230 (SHORT CYCLE)	
	1~ 230 V 50/60 Hz
	16 A
	4,8 KVA
	230 ED 100%
	Electronic
	IP 21 S
	10 Kg
	IP21S
	10 Kg
	220 x 220 x 400 mm